

Dear Trader,

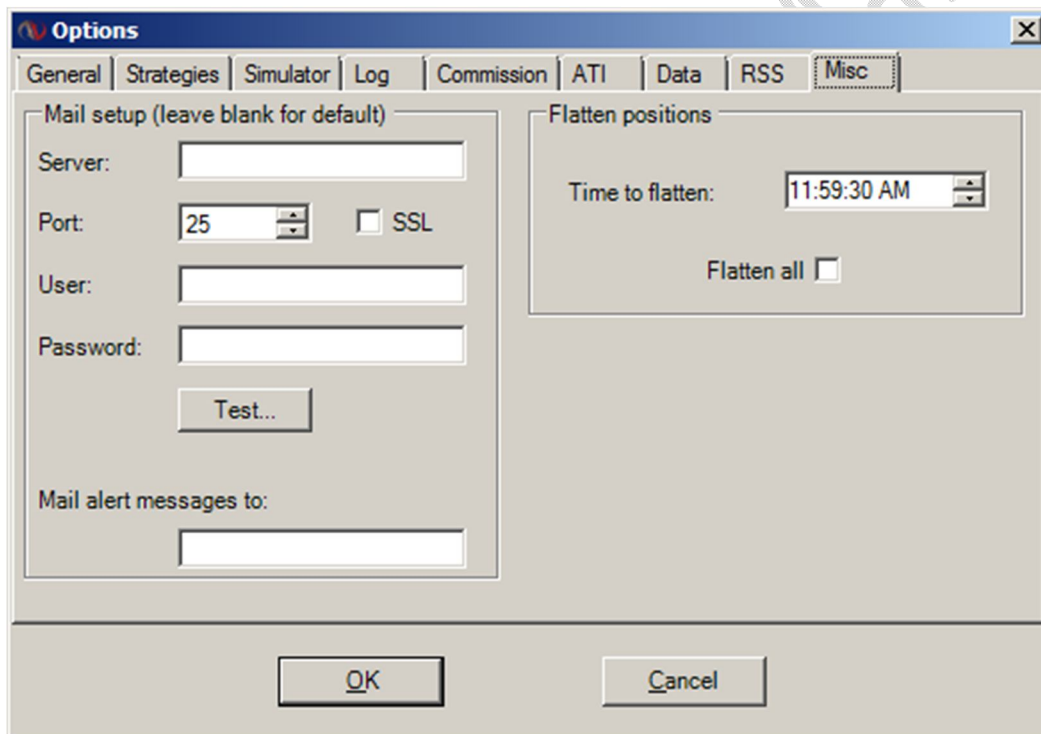
The Plan is a Forex day trading system. It is based on hourly charts. Applying The Plan using NinjaTrader trading platform requires few steps to be taken on your part. Some are for one time only, and some are for every time you get a new plan.

**Note** - You have to start applying The Plan once you receive it regardless of the time difference between us.

### Timing Related Step

To make the change in the trading platform go to:  
Tools/Options/Misc/Time to flatten parameter

**Note** - Within this window there is only one time to be changed. Make it 11:59:30 if you are on Pacific Time. That window looks like this:



### Targets Related Steps

Every trading plan comes with its own set of targets file that will work for that day only. These targets change from day to day. A new file containing the latest targets for The Plan will be sent to you along with the entry, stop loss and reversal levels for that trading day. It is imperative that you save the targets file for the day inside a folder named "NinjaTrader 7". If you save these targets in any other place, the strategy will not function properly. The targets files are in a Microsoft Office Excel Comma Separated

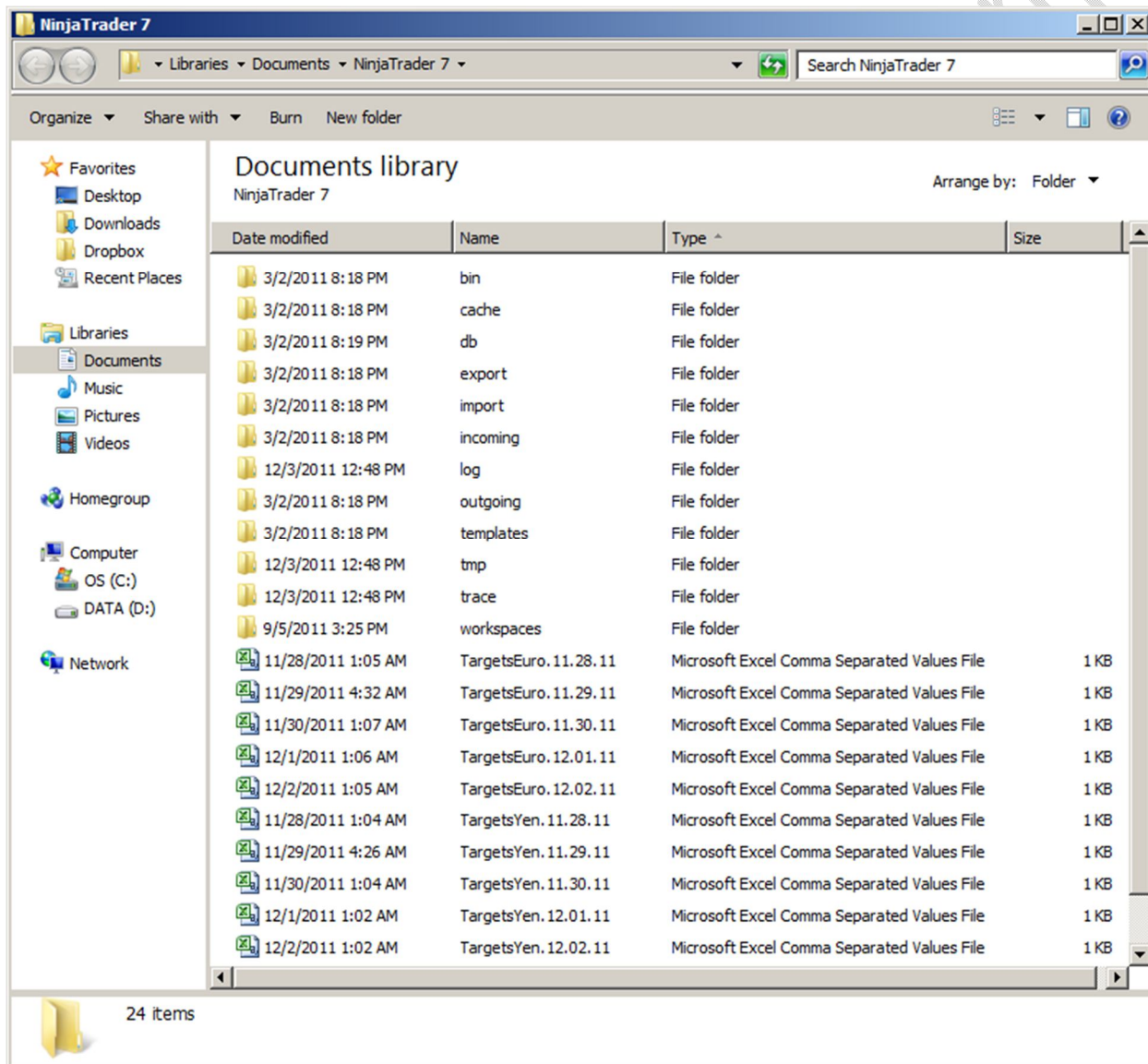
Values File format (.csv). You Do Not need to open the targets files or change their format. The targets files are usually named something like this:

TargetsYen.mm.dd.yy.csv (for the yen plan) and TargetsEuro.mm.dd.yy.csv (for the euro plan).

An example of a target file location would be:

C:\Users\whatever your computer user-owner's name is\Documents\NinjaTrader 7

See the following window as an example:

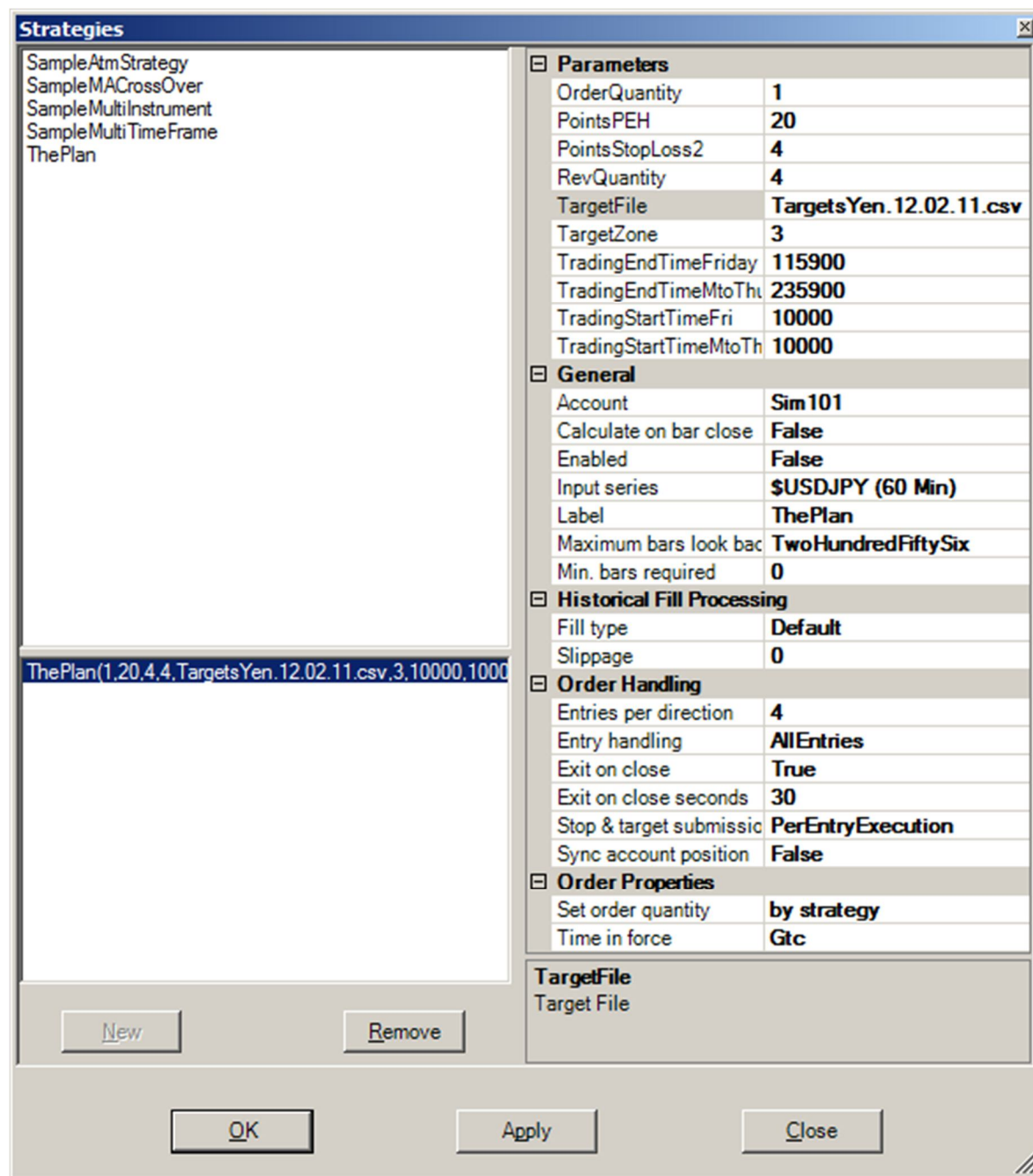


**Note** - The name of the targets file for the day should match exactly the file name of the “TargetFile” in the parameters of the strategy. It usually looks like:

TargetsYen.TheTradingDayInNumbers.csv

Or:

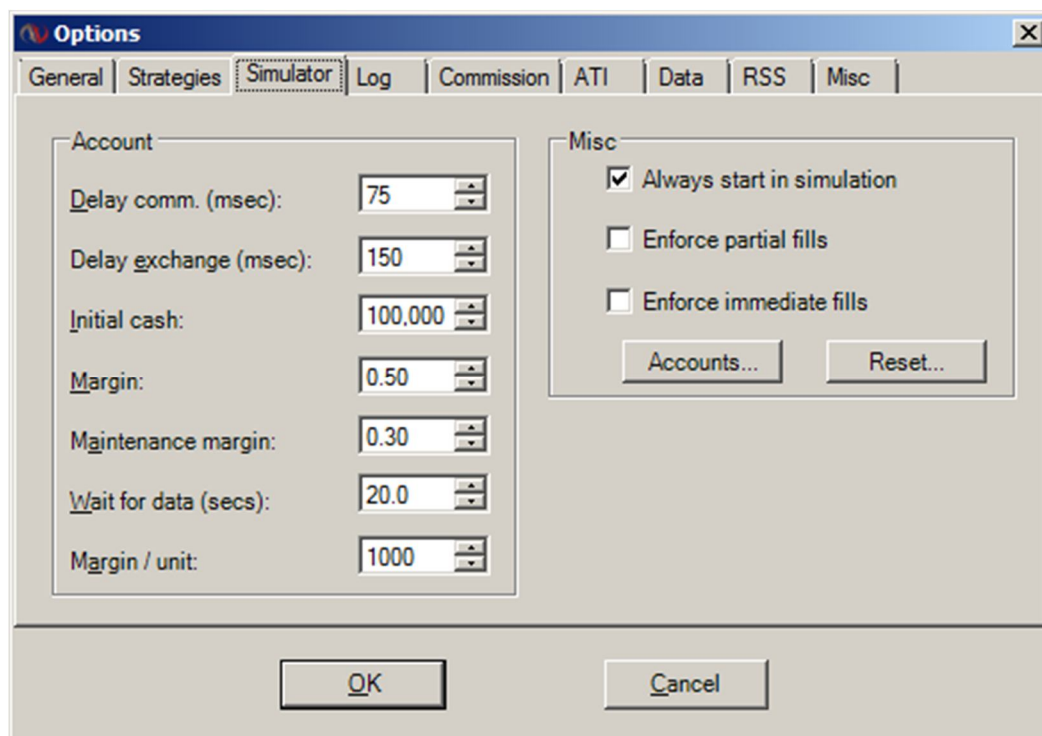
TargetsEuro.TheTradingDayInNumbers.csv



## Starting Fresh

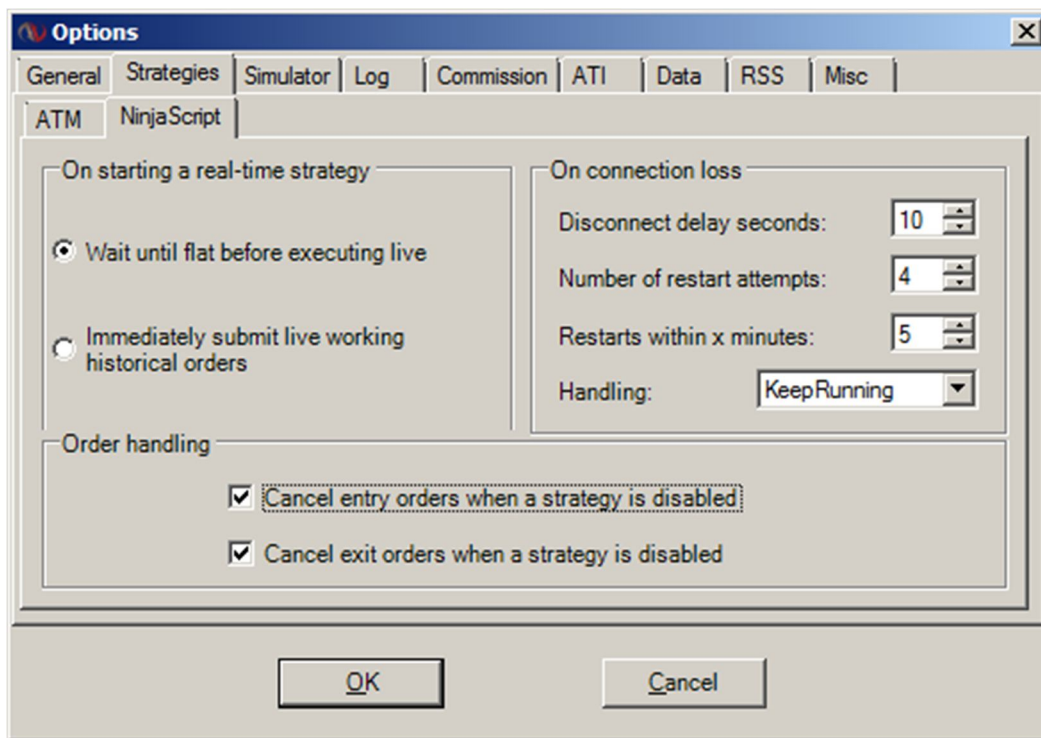
Before you start applying a new trading plan you need to make sure that you do not already have any open positions in the market. You can do so from within NinjaTrader Control Center by selecting File/Flatten Everything. You also need to clear any old existing entries and exit points showing on your charts. You can do so from within NinjaTrader Control Center by selecting:

Tools/Options/Simulator  
That window looks like this:



Hit the “Reset” button, and then hit OK to close the window. All charts should be clean and ready for a new strategy. It is recommended that you make sure the wait till flat option is selected before you start trading according to The Plan. You can do that from: Tools/Options/Strategies/NinjaScript

**Note** - The “Wait until flat before executing live” radio button may already be selected. If it is not, then select it along with both boxes in the “Order handling” section. That window looks like this:



**I got The Plan script (protected program) for the first time. What do I do now?**

Import The Plan into your trading platform one time only.

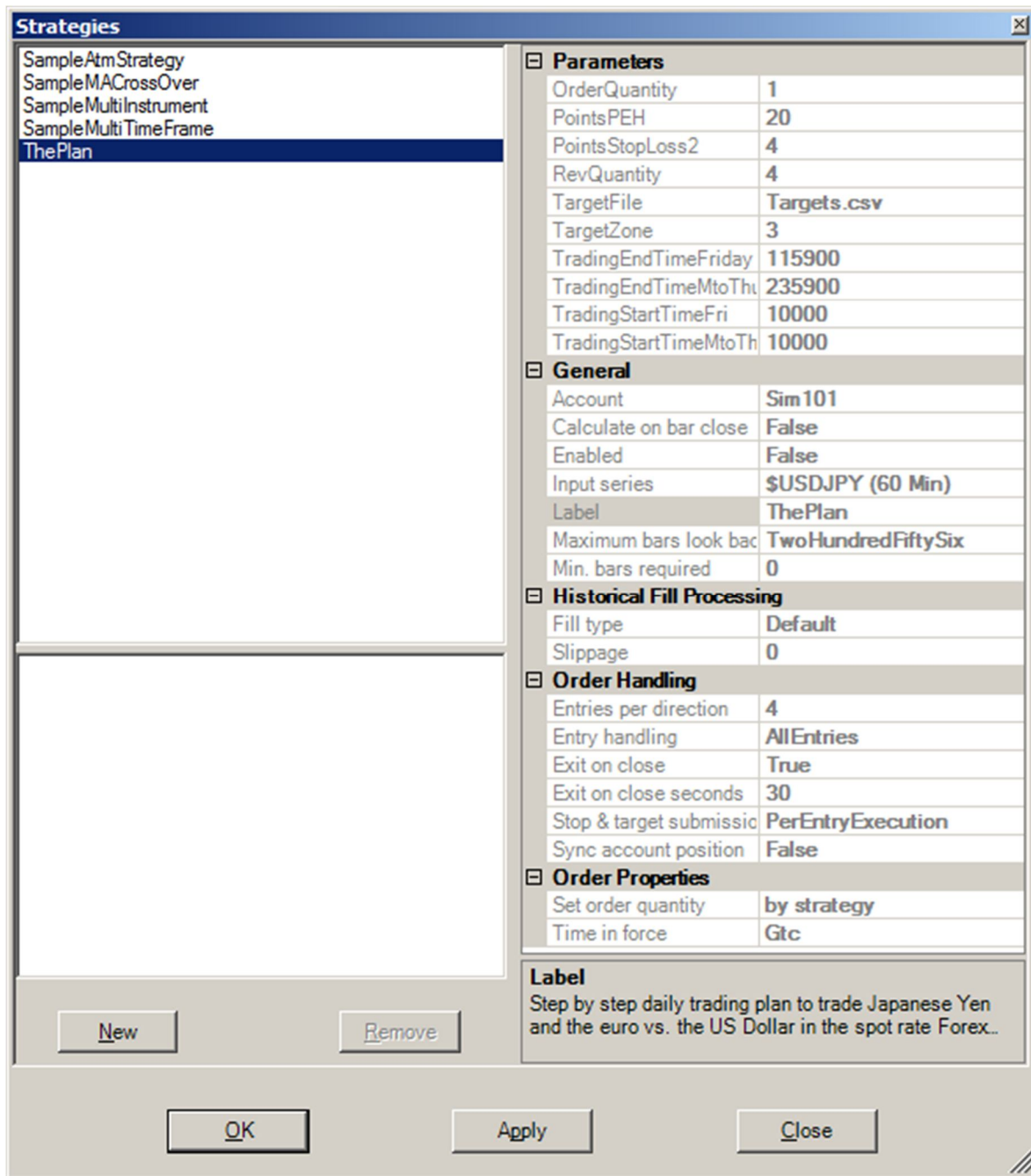
**I got The Plan email for the trading day. What do I do now?**

**Note** - You have to start applying The Plan once you receive it regardless of the time difference between us.

To start The Plan, input The Plan Strategy in your hourly chart strategy window by clicking the dollar symbol "\$" on the top of the yen chart (for a yen plan):



You will get the strategy window that looks like:



- Double click on The Plan Strategy.
- Change the name of the “TargetFile” to match exactly what the name of the day’s targets file, hit “Apply” (one time only), then hit “Close”.
- After few seconds, the trading platform should sound and show on the hourly chart at what level you got your request by the first step of The Plan filled out. Repeat the same steps for every plan every day.

**Note** – Step one of a plan will execute at the current market price.

### **What if I discover an error after applying the strategy?**

If you find out that you made a mistake after starting the strategy, you need to flatten all positions. Clear the charts and the active strategy as if you are starting a new trading day. See the Starting Fresh section on page three above.

**Note** - You need to input the strategy parameters again after every fresh start.

Thank you for reading,

*Najib Taybi*  
YenMan.com